

Organizational Chart

BEVILL STATE COMMUNITY COLLEGE



December 13, 2011

Bevill State Community College Organizational Chart

ALABAMA STATE BOARD OF EDUCATION

CHANCELLOR, THE ALABAMA COLLEGE SYSTEM
Dr. Freida H. Hill

**North AL Skills
Training Centers**

President
Dr. Anne McNutt

Administrative Assistant
Donna Brakefield

**Executive Vice
President**
Mark Ellard

Dean of Students
Dr. Kim Ennis

Dean of Instruction
Dr. Charles Murray

**Director of
External and
Public Relations**
Sherry Terry

**Assistant Dean for
Admissions,
Financial Aid and
Student Records**
Melissa Stowe

**Nursing Program
Director/Nursing Division
Chair**
Reitha Cabaniss

**College-wide Dean for
Health Sciences &
Jasper Campus Dean**
Penne Mott

**College-wide Dean for
Workforce Development
& Fayette Campus Dean**
Max Weaver

**College-Wide Dean for
Career Technical
Education & Sumiton
Campus Dean**
AL Moore

**College-Wide Dean for
Academic Transfer &
Hamilton Campus Dean**
Susan Burrow

**Associate Dean for
Academic Transfer**
Jerry Dollar

Executive Vice President
Mark Ellard

Secretary
Jerri Ford

Fayette Campus Dean
Max Weaver

Hamilton Campus Dean
Susan Burrow

Jasper Campus Dean
Penne Mott

Sumiton Campus Dean
Al Moore

Director of Financial & Personnel Services
Melissa Hanes

Buildings & Grounds

Accounting
Bruce McDonald

Computer Services
Danny Arnold

Assistant Director of Financial Services
Carol Morgan

Housekeeping

Financial Analyst
Amberley Clark

Police Department
Danny Patton

Payroll

Personnel Services

Transportation Scheduling

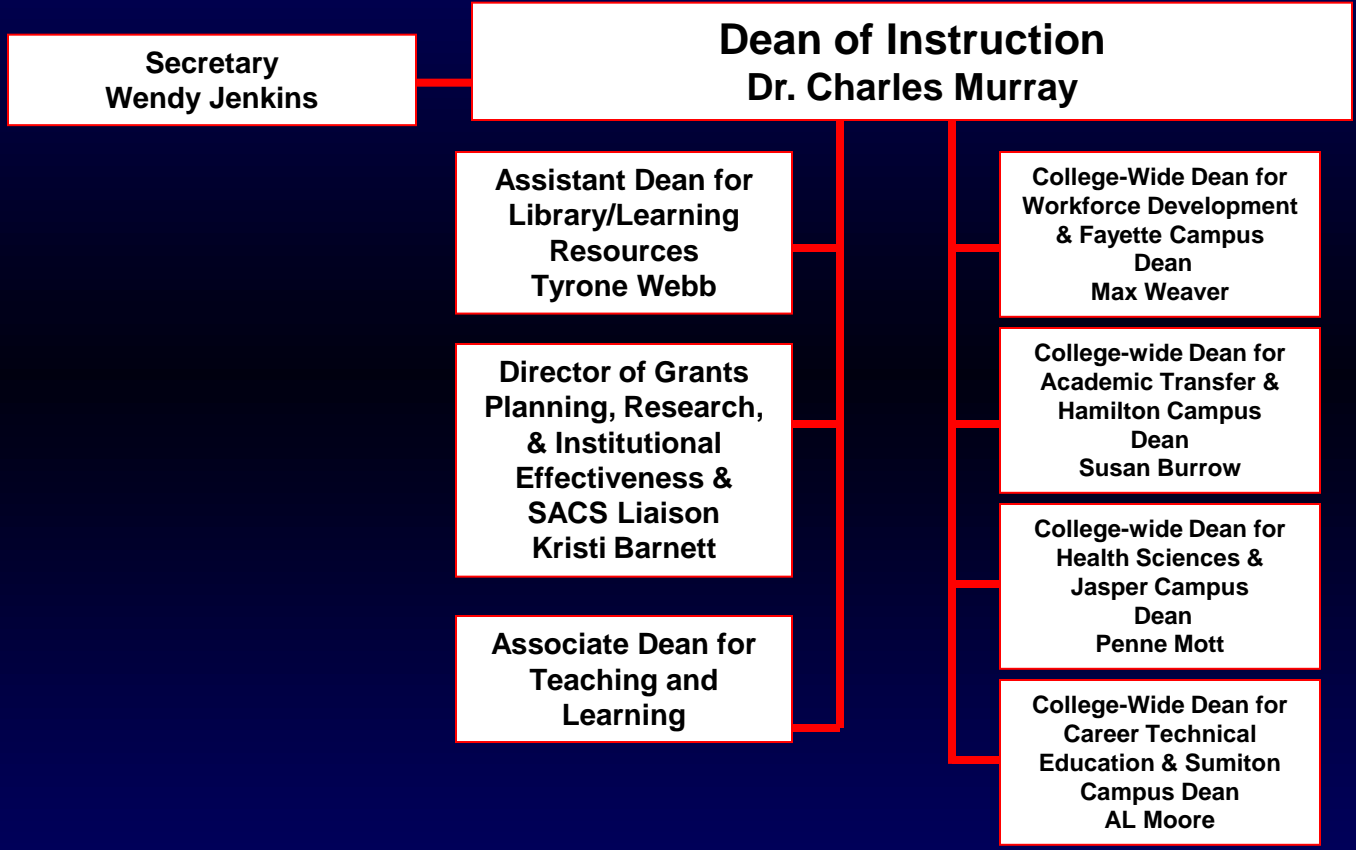
Accounts Payable

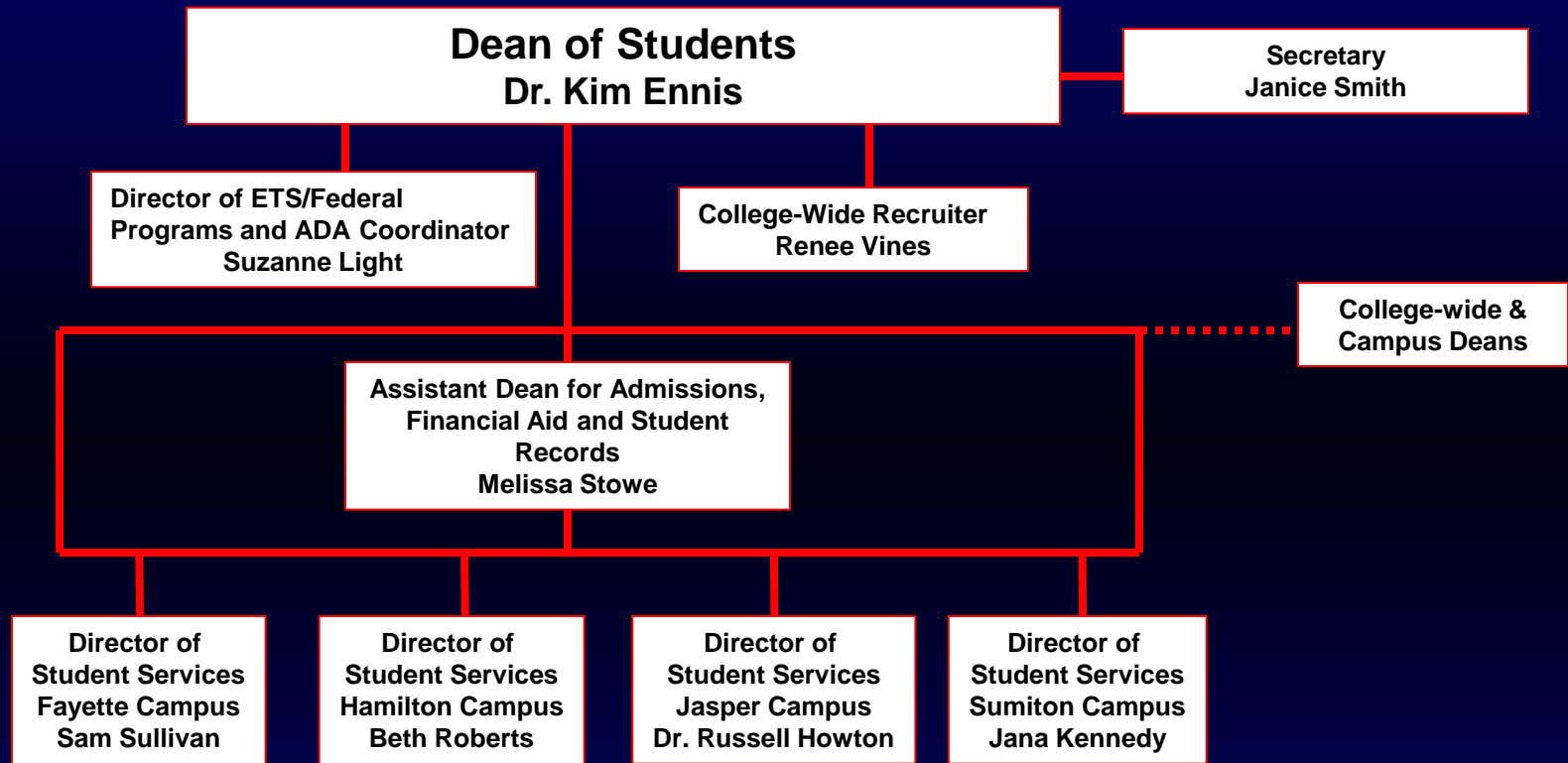
Vehicle Maintenance

Purchasing

Auxiliary Services

Campus Cashiers





**Dean of Students
Dr. Kim Ennis**

**Assistant Dean for
Admissions, Financial
Aid and Student Records
Melissa Stowe**

Admissions

Records

Testing

**Financial Aid &
Scholarships**

**Director of Federal
Programs
Suzanne Light**

**Educational
Talent Search**

Federal Programs

ADA Coordinator

**College-wide Dean for
Academic Transfer
Susan Burrow**

**Secretary
Carla Manasco**

**Academic Transfer
Programs**

**Developmental
Programs**

**Associate Dean for
Academic Transfer
Jerry Dollar**

Articulation

Advisement

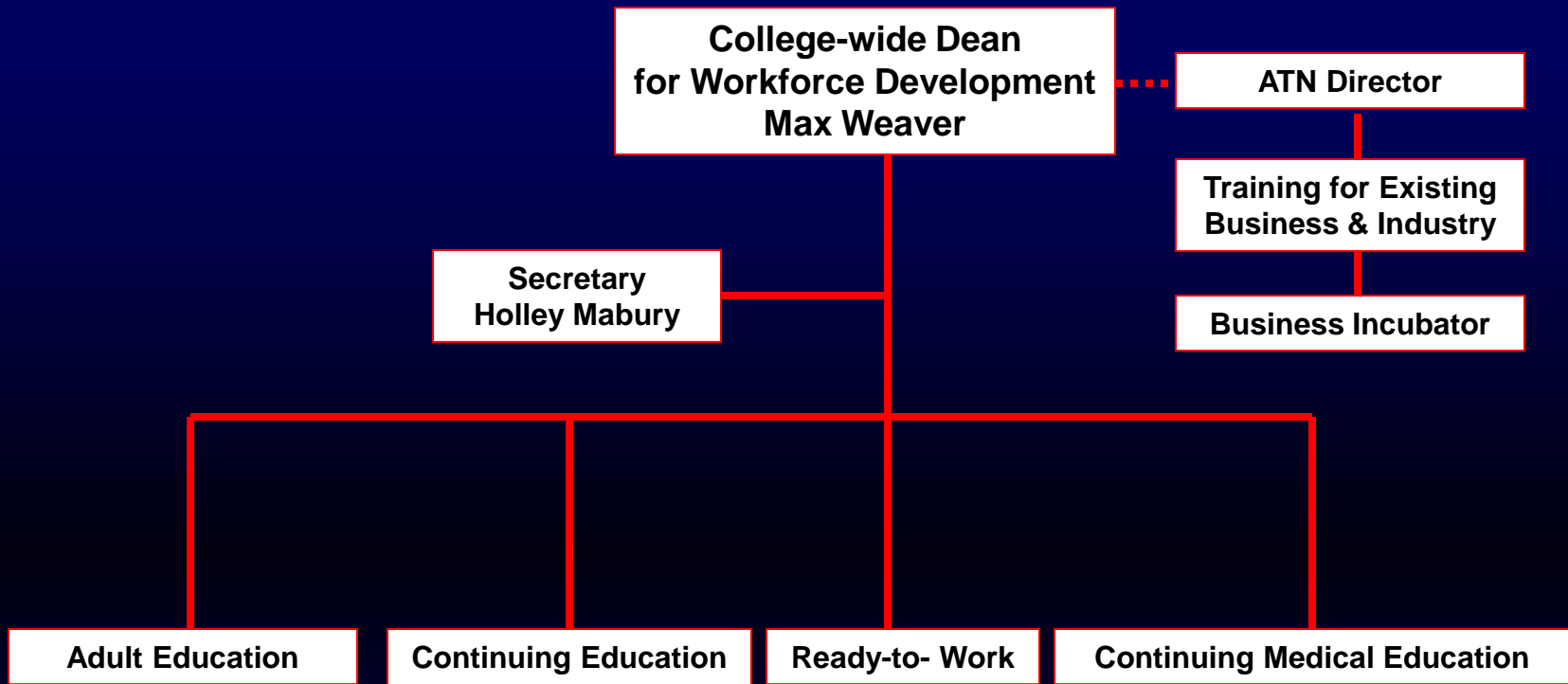
**College-wide Dean
for Career Technical Education
Al Moore**

**Secretary
Rhonda Guthrie**

**Alabama Mining
Academy**

**Career Technical
Education
Chair for Fayette &
Hamilton Campuses**

**Career Technical
Education
Chair for Jasper &
Sumiton Campuses**



College-wide Dean for Health Sciences
Penne Mott

Interim Secretary
Terri O'Rear

Nursing Program
Director/Nursing
Division Chair –
Jasper Campus
Reitha Cabaniss

Health Sciences

Nursing

EMT
Director
Scott Karr

SUR
Director
Belinda
Neumann

Fayette Campus
Chair
Robin Spann

Hamilton Campus
Chair
Dale Alexander

Jasper Campus
Chair
Reitha Cabaniss

Sumiton Campus
Chair
Joyce Breed

Campus Deans
Fayette, Hamilton, Jasper, Sumiton

Secretary

Chairs
General Studies
Health Sciences
Workforce Development
Directors & Coordinators

Day to Day Supervision

Safety & Security

Campus Facilities

Business & Industry Training

Student Services

Community Services

Federal TRIO Programs

Continuing Education

Adult Education

Learning Resources