
ORGANIZATIONAL CHART OF

BEVILL STATE COMMUNITY COLLEGE



ALABAMA COMMUNITY
COLLEGE SYSTEM

BOARD OF TRUSTEES

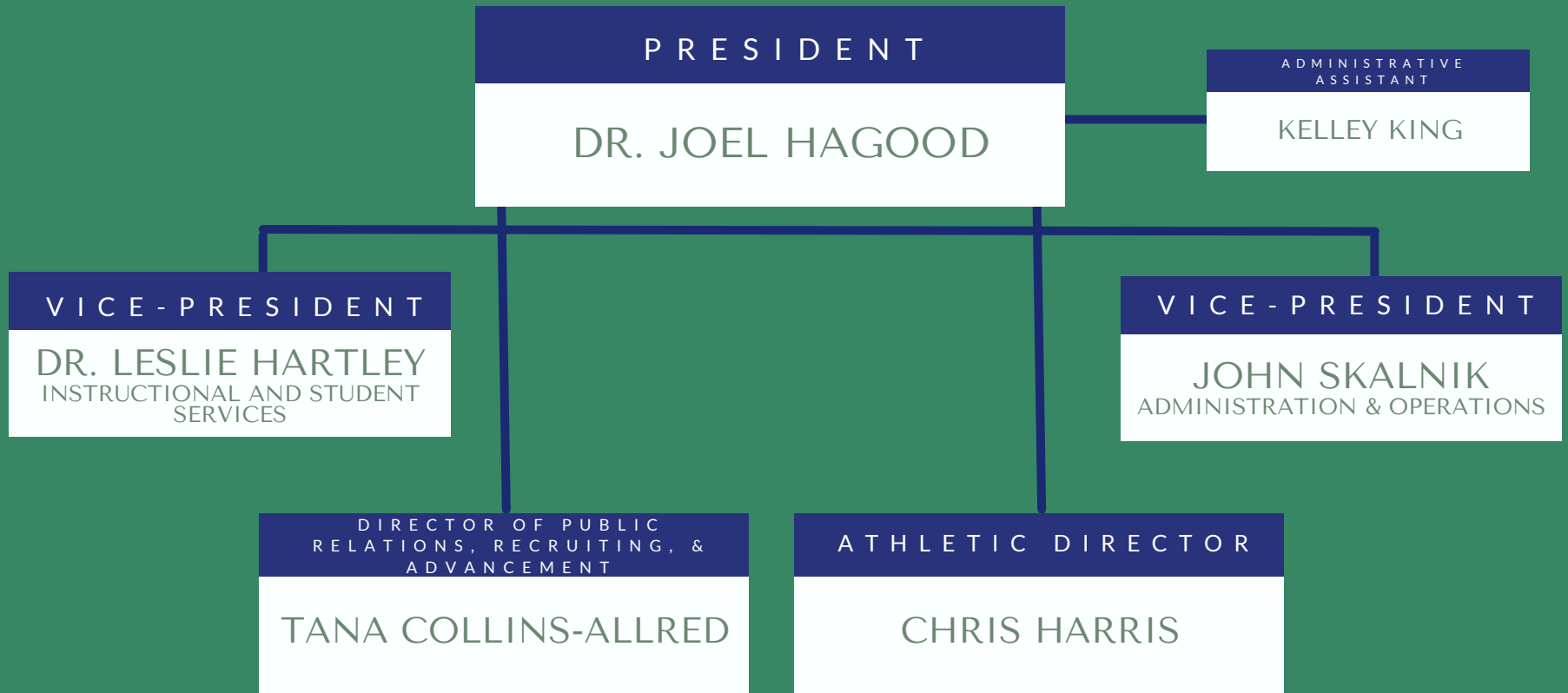
ALABAMA COMMUNITY
COLLEGE SYSTEM

JIMMY BAKER
CHANCELLOR

BEVILL STATE
COMMUNITY COLLEGE

DR. JOEL HAGOOD
PRESIDENT

BEVILL STATE COMMUNITY COLLEGE



BEVILL STATE COMMUNITY COLLEGE



VICE - P R E S I D E N T

JOHN SKALNIK
ADMINISTRATION & OPERATIONS

ADMINISTRATIVE
ASSISTANT

JERRI FORD

DIRECTOR OF
HUMAN RESOURCES

MARY KINARD

DIRECTOR OF
ACCOUNTING & FINANCE

AMBERLEY CLARK

DIRECTOR OF INFORMATION
TECHNOLOGIES

LISA STEPHENS

DIRECTOR OF
SECURITY & FACILITIES

RANDY STULTS

ORGANIZATIONAL CHART OF

BEVILL STATE COMMUNITY COLLEGE



DIRECTOR OF FACILITIES & SECURITY
RANDY STULTS

CHIEF OF POLICE
J.C. POE

ASSISTANT DIRECTOR OF FACILITIES AND MAINTENANCE
JERRY ABBOTT

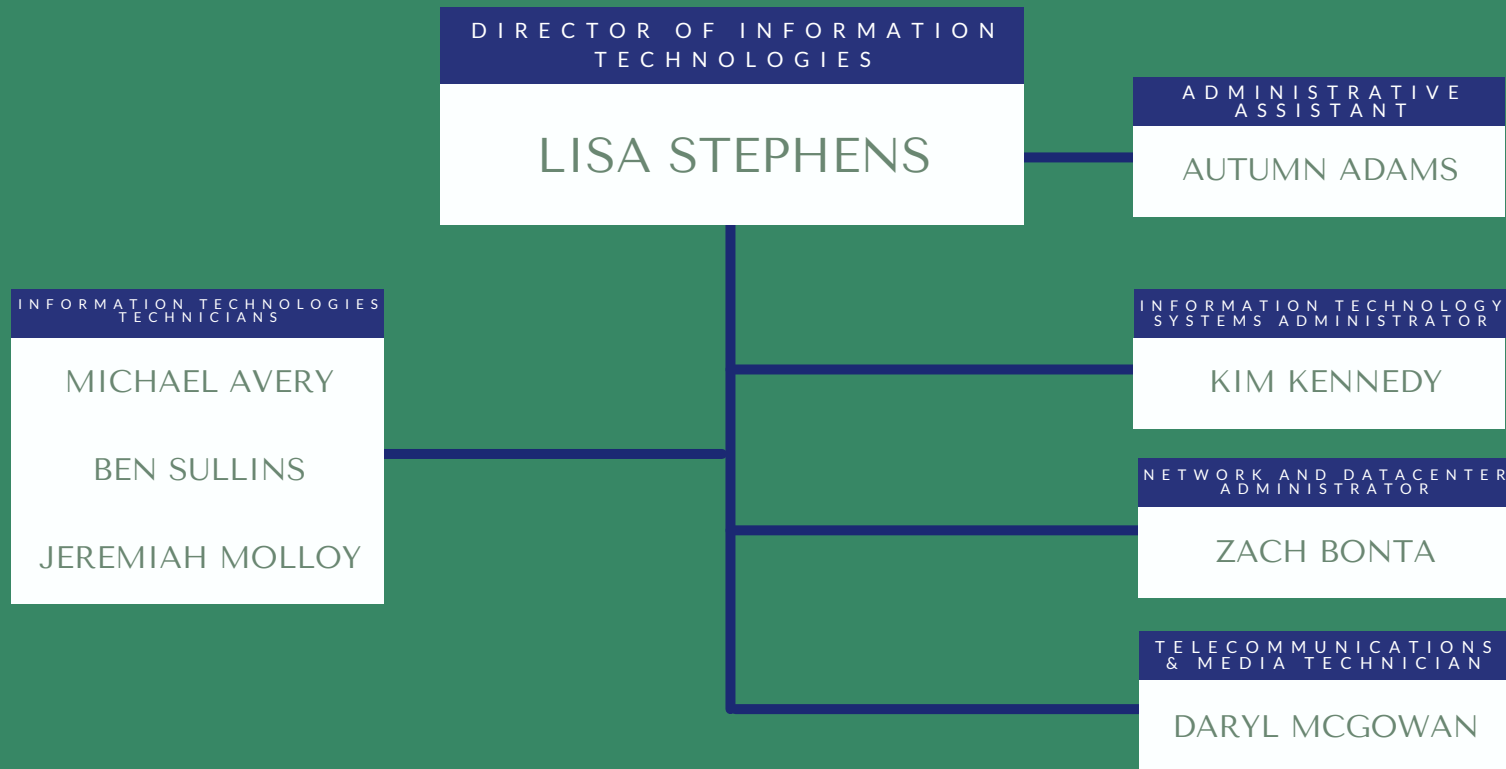
POLICE OFFICERS
PHYSICAL SECURITY GUARDS

DISPATCHERS
SWITCHBOARD OPERATORS

MAINTENANCE SUPERVISORS
FAYETTE/HAMILTON/
JASPER/SUMITON

MAINTENANCE WORKERS/HOUSEKEEPERS
FAYETTE/HAMILTON/
JASPER/SUMITON

BEVILL STATE COMMUNITY COLLEGE



ORGANIZATIONAL CHART OF

BEVILL STATE COMMUNITY COLLEGE



DIRECTOR OF
HUMAN RESOURCES

MARY KINARD

HUMAN RESOURCES
SPECIALIST

JANICE STACKS

HUMAN RESOURCES
ASSISTANT

MICHELLE ANDERSON

ORGANIZATIONAL CHART OF

BEVILL STATE COMMUNITY COLLEGE



DIRECTOR OF ACCOUNTING
& FINANCE

AMBERLEY CLARK

ACCOUNTANT

RHONDA PORTER

ACCOUNTS RECEIVABLE
SPECIALIST

KRIS HOGLAND

ACCOUNTS PAYABLE
PROCESSOR

CONNIE BASENBURG

4 CAMPUS CASHIERS/
BUSINESS OFFICE MANAGERS

FAYETTE/HAMILTON/
JASPER/SUMITON

UNRESTRICTED
FUNDS ACCOUNTANT

JAMIE MCCOOL

RESTRICTED FUNDS
ACCOUNTANT

EMMA RAINES

BUSINESS OFFICE
SPECIALIST

VACANT

BEVILL STATE COMMUNITY COLLEGE



DIRECTOR OF PUBLIC
RELATIONS, RECRUITING, &
ADVANCEMENT

TANA COLLINS-ALLRED

RECRUITERS

SARAH ALLRED
EAST

COLE RICHARDS
WEST

PART-TIME
ADMINISTRATIVE
ASSISTANT

VACANT

BEVILL STATE COMMUNITY COLLEGE



VICE - P R E S I D E N T

DR. LESLIE HARTLEY
INSTRUCTIONAL AND STUDENT
SERVICES

ASSISTANT TO THE VP FOR
INSTRUCTIONAL & STUDENT
SERVICES FOR SPECIAL
PROJECTS & GRANTS

KRISTY SWINDLE

ADMINISTRATIVE
ASSISTANT

DONNA BRAKEFIELD

DEAN OF STUDENTS

MELISSA STOWE

DEAN OF WORKFORCE
SOLUTIONS AND
ECONOMIC
DEVELOPMENT

AL MOORE

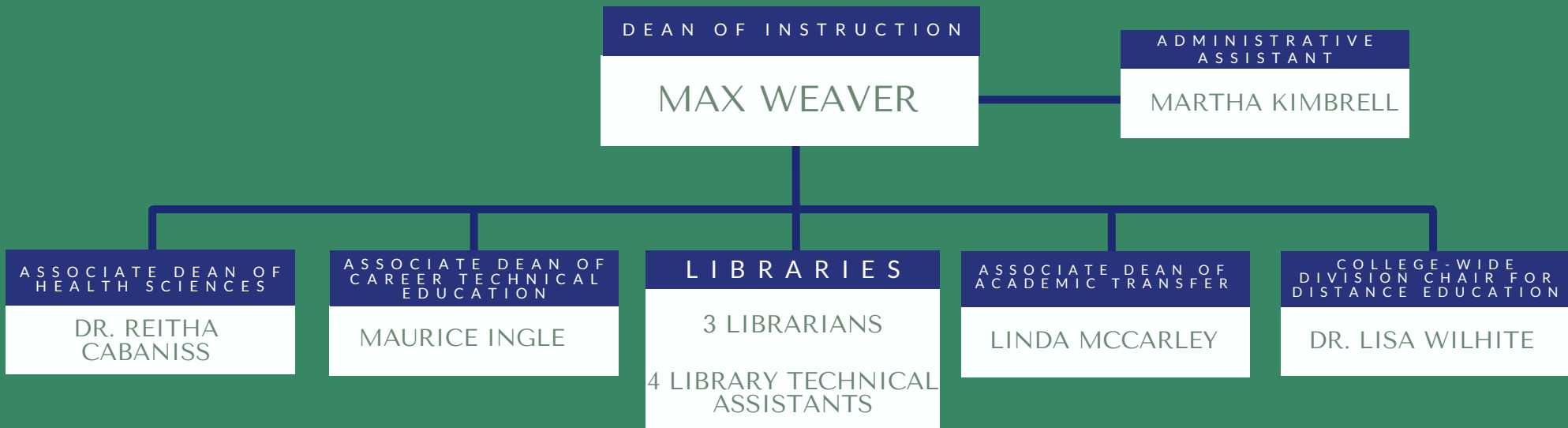
DEAN OF PLANNING,
RESEARCH, &
STUDENT SUCCESS

DR. RUSSELL
HOWTON

DEAN OF
INSTRUCTION

MAX WEAVER

BEVILL STATE COMMUNITY COLLEGE



BEVILL STATE COMMUNITY COLLEGE



ASSOCIATE DEAN OF
HEALTH SCIENCES

DR. REITHA CABANISS

ADMINISTRATIVE
ASSISTANT

KATHY MCCULLAR

EMS PROGRAM
DIRECTOR

SCOTT KARR

EMS FACULTY

FAYETTE/HAMILTON/
JASPER/SUMITON

NURSING PROGRAM
DIRECTOR

DR. KIM EDDY

NURSING
DIVISION CHAIRS

FAYETTE/HAMILTON/
JASPER/SUMITON

NURSING
FACULTY

FAYETTE/HAMILTON/
JASPER/SUMITON

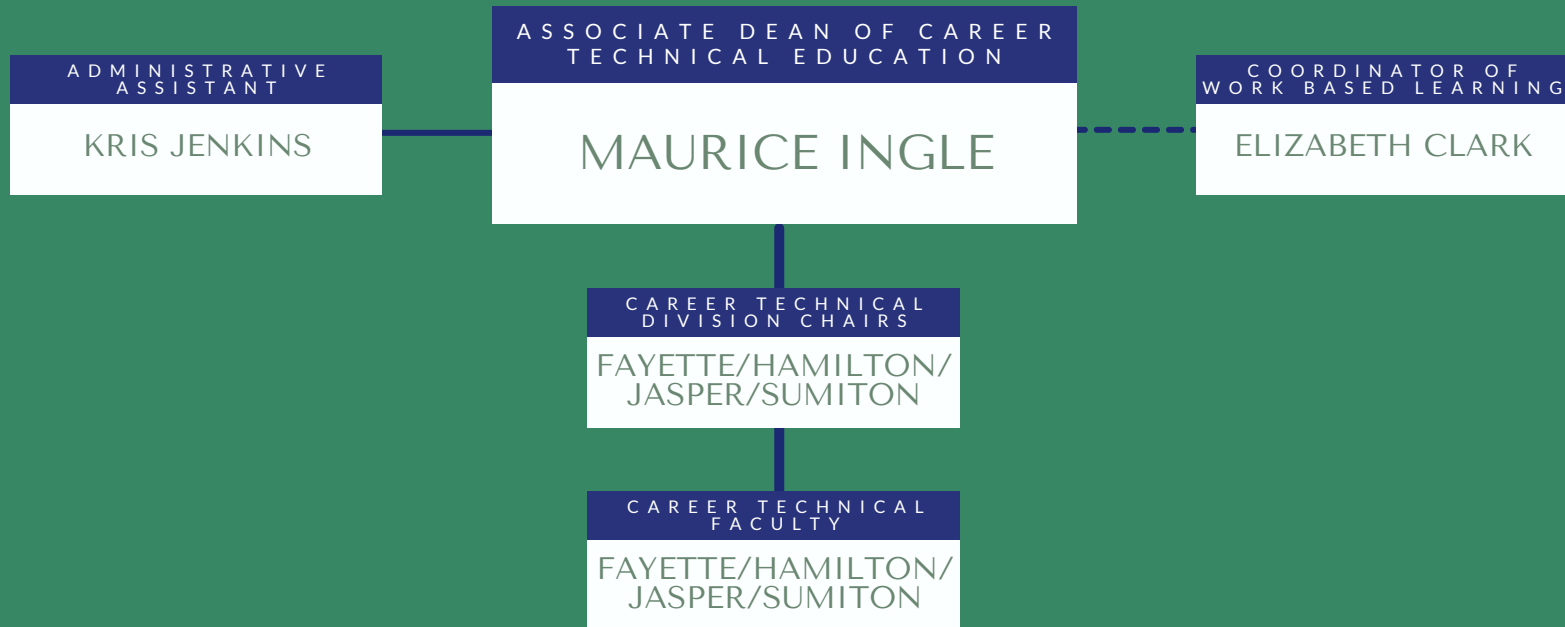
DIRECTOR OF
SURGICAL TECHNOLOGY

LINDA NEUMANN

SURGICAL TECHNOLOGY
FACULTY

FAYETTE/HAMILTON/
JASPER/SUMITON

BEVILL STATE COMMUNITY COLLEGE



ORGANIZATIONAL CHART OF

BEVILL STATE COMMUNITY COLLEGE



ASSOCIATE DEAN OF
ACADEMIC TRANSFER

LINDA MCCARLEY

ACADEMIC TRANSFER
DIVISION CHAIRS

FAYETTE/HAMILTON/
JASPER/SUMITON

ACADEMIC TRANSFER
FACULTY

FAYETTE/HAMILTON/
JASPER/SUMITON

BEVILL STATE COMMUNITY COLLEGE



COLLEGE-WIDE DIVISION
CHAIR FOR DISTANCE
EDUCATION

DR. LISA WILHITE

TESTING
COORDINATORS

FAYETTE/HAMILTON/
JASPER/SUMITON

INSTRUCTIONAL
DESIGNER/MEDIA SPECIALIST

JOSH MADISON

BEVILL STATE COMMUNITY COLLEGE



DEAN OF STUDENTS

MELISSA STOWE

DIRECTOR OF FINANCIAL AID

DOUG HARTLEY

FINANCIAL AID

2 F.A. OFFICERS

CENTRAL RECORDS OFFICER

APRIL LOWE

ADMINISTRATIVE ASSISTANT

JENNIFER FRANKLIN

DIRECTOR OF ENROLLMENT MANAGEMENT

JILL PREUNINGER

DIRECTOR OF STUDENT SERVICES

SHERRY TERRY FAYETTE

FAYETTE

STUDENT SERVICES SPECIALISTS

TESTING COORDINATOR

DIRECTOR OF STUDENT SERVICES

BETH ROBERTS HAMILTON

HAMILTON

STUDENT SERVICES SPECIALISTS

TESTING COORDINATOR

DIRECTOR OF STUDENT SERVICES

JANA KENNEDY JASPER

JASPER

STUDENT SERVICES SPECIALISTS

TESTING COORDINATOR

DIRECTOR OF STUDENT SERVICES

JANA KENNEDY SUMITON

SUMITON

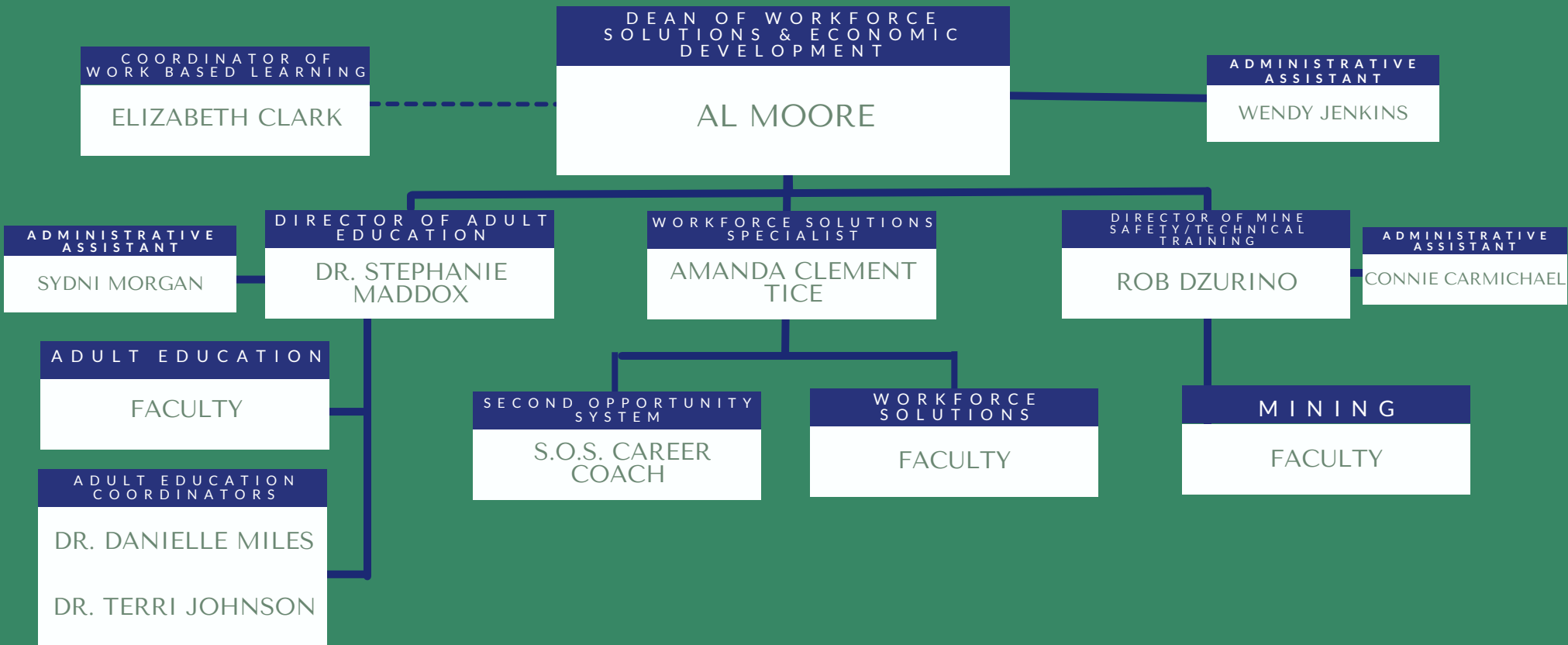
STUDENT SERVICES SPECIALISTS

TESTING COORDINATOR

DIRECTOR OF PICKENS CO. ED. CTR.

STEVEN KOON

BEVILL STATE COMMUNITY COLLEGE



BEVILL STATE COMMUNITY COLLEGE



DEAN OF PLANNING,
RESEARCH, &
STUDENT SUCCESS

DR. RUSSELL HOWTON

DATA MANAGER

KATIE GALLAGHER

DIRECTOR OF EDUCATION
OPPORTUNITY

CRYSTAL HICKS

EDUCATION
OPPORTUNITY

EOC SPECIALISTS

DIRECTORS OF
TALENT SEARCH

DEB JACKS
FAYETTE

KELLEY HARBISON
SUMITON

TALENT SEARCH

T.S. ADVISORS /
RECORD MANAGERS

ETS - SUMITON
ADMINISTRATIVE
ASSISTANT

AMANDA LAIRD

DIRECTORS OF STUDENT
SUPPORT SERVICES

MISTY MORGAN
FAYETTE

GINA FRAZIER
HAMILTON

JEREMY HARKNESS
JASPER

NATALYA WINTERS
SUMITON

STUDENT SUPPORT
SERVICES

SSS ACADEMIC
ADVISORS/RECORDS
COORDINATORS

DIRECTORS OF
UPWARD BOUND

JULIE MOORE
FAYETTE

RONDA TIDWELL
HAMILTON

GINA THOMASON
SUMITON

UPWARD BOUND

UB PROJECT
COORDS./RECORD MGRS

DIRECTOR OF UPWARD
BOUND MATH & SCIENCE

ANNE UHLMAN

U B M & S

ACADEMIC ADVISOR